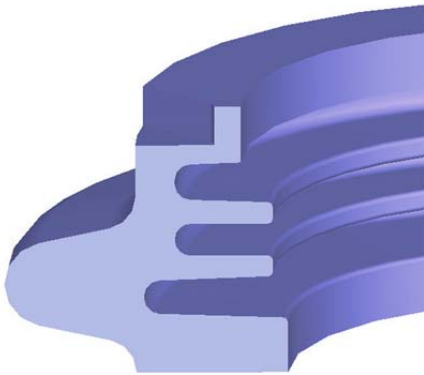




*Quality and Value
Through Engineering*

- ◆ Substantial Extended Life
- ◆ Heat Resistant Material
- ◆ Lower Overall Cost



PN 40-2240

This cross sectional view shows the enhanced interior surface which is longer than the original design.

AXCELIS

Model GSD HE

SOURCE BUSHING



Signet 40-2240 Enhanced GSD HE Bushing

Signet Products offers this replacement bushing for the Axcelis GSD HE Implanters. It is an enhanced design offering improved performance through both its configuration and the composite material used.

The length of the interior surface has been increased. Increasing the surface distance improves the insulating efficiency. The result is improved performance and extended operating life.

This part is a direct replacement for the OEM part. The alignment holes, O-ring flat and mounting pattern are all to the OEM design.

The polymer material has a high ceramic content for maximum insulating value and for high thermal conductivity.

Signet P/N	OEM Part #	Description
40-2240	17322400	GSD HE Source Bushing

Ref. = Design Alteration of OEM Part